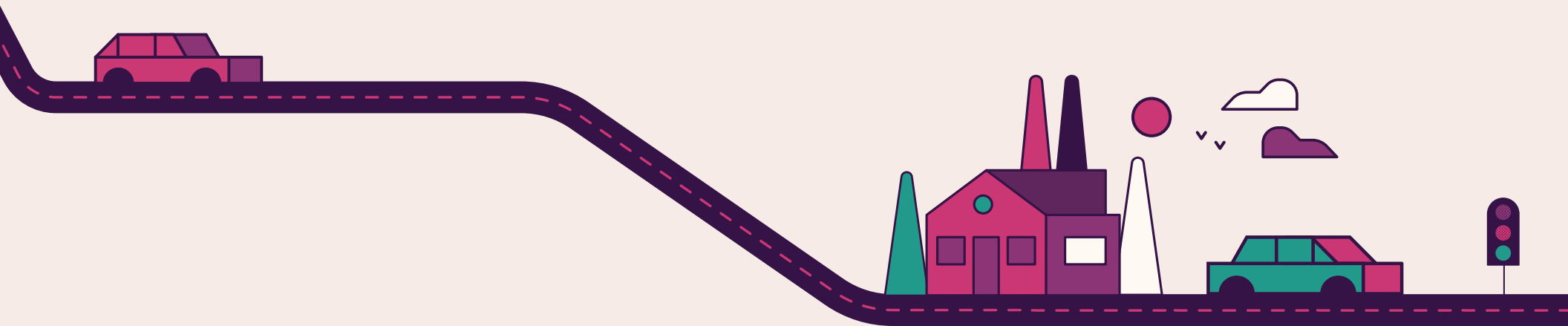




**get the most
mileage out of
your lease.**

**smartlease
protect.**



ally.com

©2020 Ally Financial Inc. All rights reserved. Ally, SmartLease Protect and Do It Right are registered service marks of Ally Financial Inc.

Rev. 02-20

SLP-BROC

help take 'excess' out of the equation.

When it comes to leasing a new vehicle, life can sometimes throw you unexpected twists and turns that can affect your driving habits and the overall condition of your vehicle. Whether it's a longer drive to work or an unfortunate ding in your door, SmartLease® Protect¹ has your back.

From day one to lease-end, you'll enjoy the ride knowing that you're protected against excess mileage and wear that can occur during your lease term. And best of all, if you're dissatisfied for any reason, a full refund is available if you cancel within the first 60 days.

To learn more, ask your dealer representative for complete details.

¹SmartLease Protect is available in all states except for New York and Texas.



more miles covered with less worry.

Driving further, no problem. With SmartLease Protect, you'll drive with added peace of mind with excess mileage coverage up to \$400.



essential wear protection for you.

During the term of your lease, your vehicle will experience normal wear as the result of everyday usage. We get that. We also understand that excess wear may occur which can result in additional, unexpected charges to you at the end of your lease.



with smartlease protect the following areas of your vehicle are covered²:

- Exterior Surface Damage
- Interior and Upholstery
- Tires and Wheels
- Bumpers
- Glass and Light Lenses

Ally will also waive:

- Charges for single items of covered excess wear such as dings and dents that are less than \$1,000 each to repair
- Excess wear charges up to \$7,500 if you drive an average of 25,000 miles or less per year
- 50% of excess wear charges up to \$3,750 if you drive more than an average of 25,000 miles per year
- Missing equipment and parts with a value of \$150 or less per part (including items such as navigation system DVDs, DVD player headphones and remote control)

²See the SmartLease Protect Agreement for information, limitations and exclusions.

